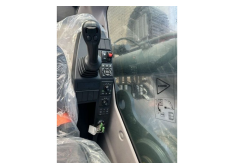


Volvo EC300EL

Construction	Excavator
Year	2023
Mileage	0 km
Fuel	Diesel
Operating hours	1 h
Weight	29.750 kg
Length	106 cm
Width	319 cm
Height	351 cm
General state	Very good
Technical state	Very good
Optical state	Very good
Accessories	Air conditioning Cabin Central greasing Hammer hydraulics Led power package Led Worklights Radio/CD player Reversing camera Side door



Description

- Volvo EC300 EL
- Engine Stage V
 - Monoblock boom 6.2m HD
 - Dipper arm 3.05m
 - 600mm plates (OTHER TRACK SIZE POSSIBLE)
 - Protective plate under undercarriage 10mm
 - Counterweight 6,200kg
 - Rear view camera
 - Side camera
 - Hose rupture valves
 - LED work lighting
 - X1 Hammer/ siccors function
 - X3 tiltrotator function
 - Refueling pump
 - Engine heater
 - Automatic climate control
 - Reversible fan
 - Driver's seat air-suspended and heated
 - Radio MP3/USB/Bluetooth hands-free.
 - Lower wiper
 - Sun shields
 - Cleaning airgun



Are you looking to upgrade your machines or in the market for heavy machinery like this? Get in touch with us or visit our website.

<https://www.swanenbergtrading.nl>

T.: [+31 \(0\)73 303 00 59](tel:+31733030059)

E.:

info@swanenbergtrading.nl

Rosmalensedijk 10

5236 BD, 's-Hertogenbosch

Netherlands